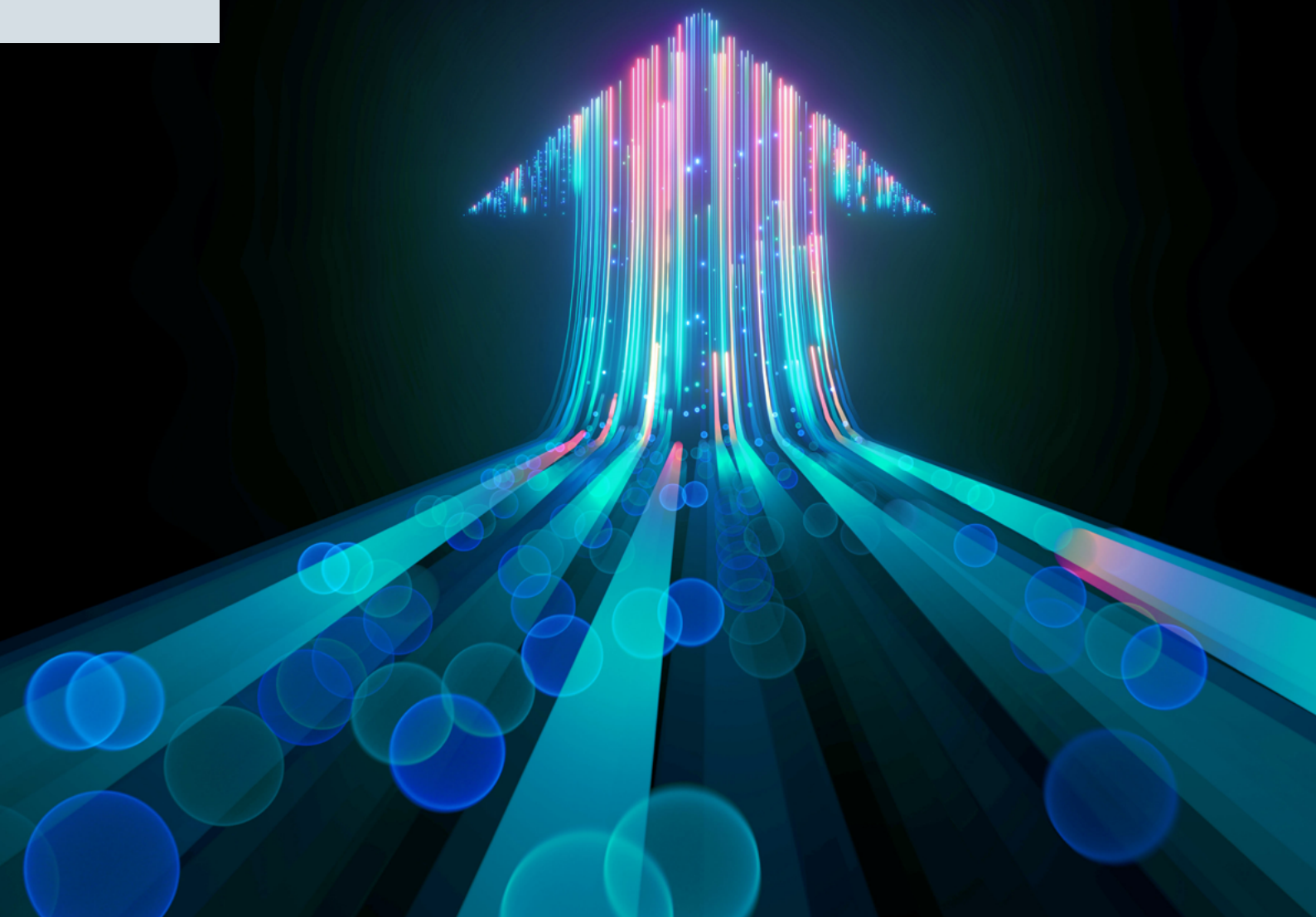


Q&A



October 2023

WisdomTree US Efficient Core



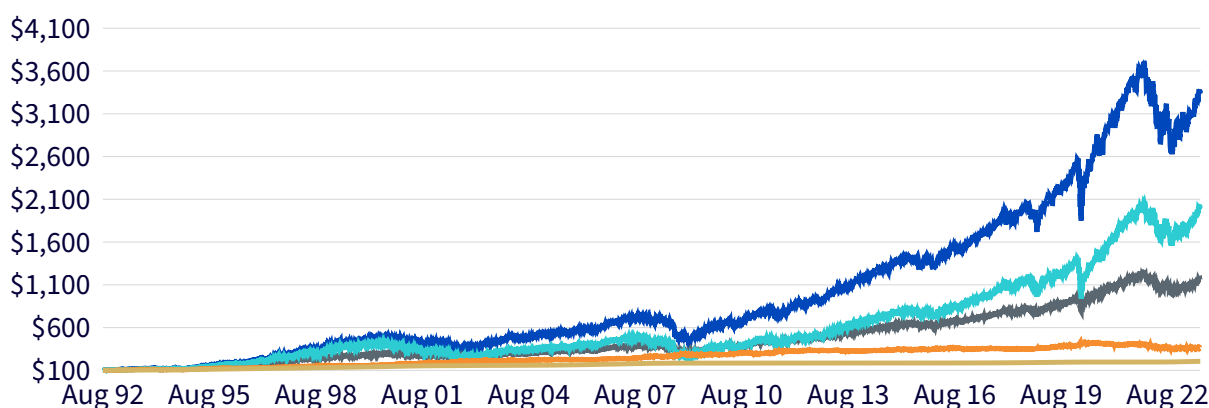
WisdomTree.eu
+44 (0) 207 448 4330

Investors often grapple with the decision between low-cost building blocks or improved risk-return profile. The WisdomTree US Efficient Core strategy is designed to provide both.

By leveraging the traditional 60/40 portfolio, we aim to offer a portfolio with equity-like volatility, but with the superior Sharpe ratio of a 60/40 portfolio¹. Historically and over the long term, this resulted in:

- + Better long-term performance and a higher Sharpe ratio than a pure equity portfolio
- + Improved diversification leading to smaller drawdowns during volatile markets

- Leveraged 60/40
- 60% Stocks, 40% Bonds
- 100% US Equities
- 100% US Treasuries
- 100% US Cash



	Annualized Returns	Volatility	Sharpe Ratio	Max Drawdown
● 100% US Equities	10.21%	18.6%	0.42	-55.2%
● 100% US Treasuries	4.21%	4.7%	0.39	-18.7%
● 100% US Cash	2.37%	0.2%	0.00	-0.2%
● 60% Stocks, 40% Bonds	8.28%	10.4%	0.57	-31.2%
● Leveraged 60/40	12.06%	16.2%	0.60	-46.7%

Source: WisdomTree, Bloomberg, as from 31 Aug 92 to 31 Jul 23. Stocks are represented by S&P 500 net Total Return. Bonds are represented by the Bloomberg US Treasury Total Return Index. The 60/40 portfolio is a combination of 60% the S&P 500 and 40% US Treasury, rebalanced back to 60/40 annually. The levered 60/40 portfolio invests 150% each month in the 60/40 portfolio, and borrow 50% each month at a cost of one to three month T-bill. This is inspired by the original research from Cliff Asness, “Why Not 100% Equities”, The Journal of Portfolio Management, 1996. **Historical performance is not an indication of future performance and any investments may go down in value. You cannot invest directly in an index.**

1 This is a concept first defined by Clifford S Asness in “Why Not 100% Equities: A Diversified Portfolio Provides More Expected Return per Unit of Risk”. 1996.

The WisdomTree US Efficient Core UCITS ETF was designed to help investors create more optimal portfolio blends and magnify portfolio exposures through the same concept that drives their asset allocation. While this ETF do not borrow to gain additional exposure, it uses futures contracts to enhance the capital efficiency of the ETF.

1. What is Efficient Core?

The US Efficient Core strategy delivers an investment into large-cap equities with a risk management overlay provided by fixed income, specifically US Treasuries. This exposure is achieved by investing 90% in equities and 10% in cash collateral. The strategy also incorporates 60% bond exposure through a laddered portfolio of US Treasury futures contracts.

2. What are some of the characteristics?

The US Efficient Core strategy aims to enhance total returns while mitigating volatility and drawdown through investment in a laddered strip of US Treasury futures. Since 90% of the strategy is invested in the 500 largest US companies by market capitalization, this strategy is highly correlated to the equity market, but, thanks to the fixed income overlay, the Sharpe ratio and drawdown can be meaningfully improved.

3. How does US Efficient Core compare to minimum volatility portfolios?

Minimum and low-volatility strategies are designed to offer downside protection during market downturns, but they also have lower upside participation during bull markets. By comparison, the Efficient Core strategy could offer higher upside capture while maintaining similar down capture.

This strategy generally has a higher beta than low and minimum volatility portfolios, but similar average annual volatility. A common criticism of minimum volatility strategies is that they are interest rate sensitive and to diversify interest rate risk in our Efficient Core strategy, we invest in laddered Treasury futures contracts.

4. What drives the efficiency of these portfolios?

The mix between US equities and US Treasuries (and their low average correlation) drives the efficiency of these portfolios. Historically, US Treasuries have served as a reliable hedge against selling pressure on risk assets.

5. How did we construct the strategy?

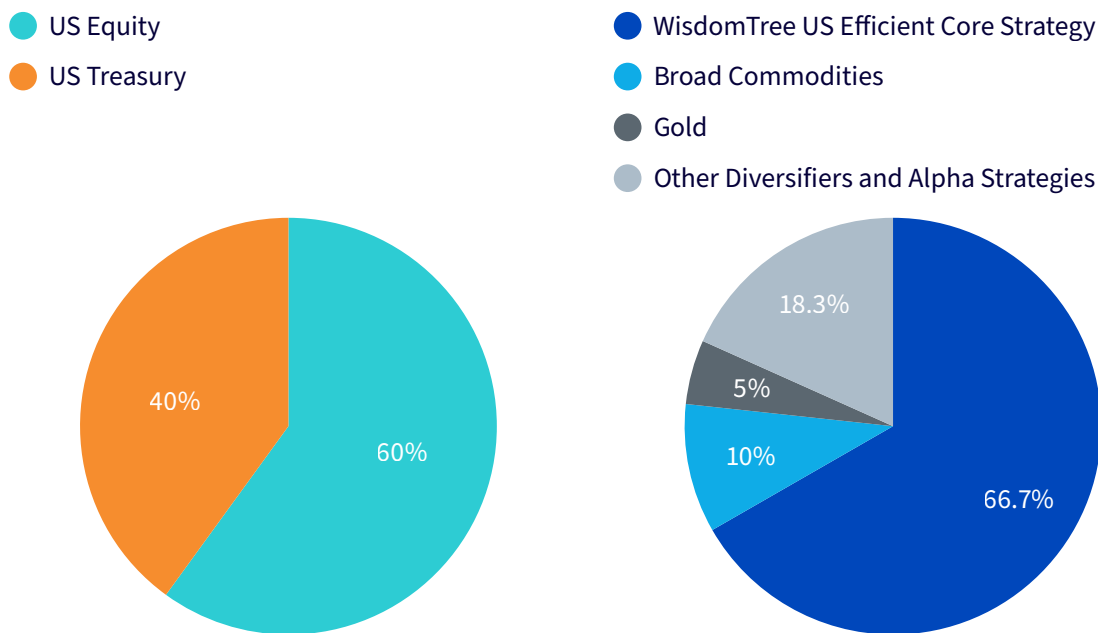
- + **Equity Component:** 90% (\$90 exposure for every \$100 invested in the ETF) invested in a portfolio of 500 large-cap US stocks, weighted by market capitalization to provide broad exposure to US Equities.
- + **Cash Component:** For every \$100 invested in the ETF, \$10 is held in short-term collateral that earns returns comparable to U.S. Treasury bills.
- + **Bond Futures Ladder:** To help magnify the benefits of the asset allocation, \$60 of bond futures are overlaid on top of the \$90 of equity exposure and \$10 of cash collateral.
 - Treasury futures are laddered (equal-weighted) across the 2-, 5-, 10- and 30-year segments of the yield curve to diversify interest rate risk.
 - Average effective duration for the fixed-income portion will typically be 7–7.5 years and is generally meant to offer the duration profile of traditional aggregate bond indexes.

Bottom line: The combined exposure can, in our view, be employed in a way to add more fixed-income diversification to a straight equity portfolio or to create capital efficiency and “free space” for diversifiers.

6. How should investors approach this strategy in their portfolios?

- + **Equity replacement:** A low fee, core equity solution can serve as an efficient replacement to existing core equity exposures. By offering return enhancement, improved risk management and diversification potential compared to a 100% equity portfolio, this index could also be used to complement existing equity exposures.
- + **A capital efficiency tool:** By offering equity and bond exposure in a capital-efficient manner, the index can help free up space in the portfolio for alternatives and diversifiers.

In a classic 60/40 portfolio there is often no space left for diversifiers. Should an investor wish to add broad commodities, gold or other alpha strategies, they would usually need to sell some bond or equity positions. However, in an Enhanced portfolio, for example, using the WisdomTree US Efficient Core strategy only 66.7% of the capital is used to achieve the 60% equity and 40% bond exposure. This approach leaves one-third of the portfolio for diversifiers enabling the Sharpe ratio of the Enhanced portfolio to be improved without sacrificing potential returns.



Source: WisdomTree. For illustration purposes only.

7. How might Efficient Core perform during different market scenarios?

Efficient Core is likely to perform best during periods of sustained equity market gains combined with falling interest rates, similar to the conditions we observed in 2019. The opposite is also true: rising yields and falling equities are likely to generate negative returns. However, compared to a portfolio of 100% equities, Efficient Core may outperform on the downside as long as losses on the bond futures ladder are less than losses on a 100% equity allocation.

8. How is the fixed income overlay managed for the strategy?

The strategy gains exposure to fixed income via treasury futures contracts by investing in a ladder across the yield curve. It equal-weights contracts of 2-, 5-, 10- and 30-year durations. These contracts are rolled over before their expiration in March, June, September and December.

9. How does the strategy manage risk?

The WisdomTree US Efficient Core strategy is set to rebalance quarterly to its 90/60 target exposure. The strategy also employs a 5% rebalance trigger. If the strategy deviates from the targeted 90% equity and 60% US Treasury exposure by 5%, the strategy will be rebalanced back to target allocations.

10. Is it possible for the strategy to break?

Despite its use of accounting leverage, the ETF cannot incur losses exceeding the principal amount invested. However, the use of leverage does magnify both gains and losses and, as a result, making the strategy potentially more volatile.

Fund Information: WisdomTree US Efficient Core UCITS ETF

Ticker	Exchange	ISIN	Bloomberg Code	Listing Currency	Base currency	TER%
NTSX	LSE	IE000KF370H3	NTSX LN	USD	USD	0.20
WTEF	LSE	IE000KF370H3	WTEF LN	GBx	USD	0.20
NTSX	Borsa Italiana	IE000KF370H3	NTSX IM	EUR	USD	0.20
WTEF	XETRA	IE000KF370H3	WTEF GY	EUR	USD	0.20

TER: Total expense ratio.

Important Information

Marketing communications issued in the European Economic Area (“EEA”): This document has been issued and approved by WisdomTree Ireland Limited, which is authorised and regulated by the Central Bank of Ireland.

Marketing communications issued in jurisdictions outside of the EEA: This document has been issued and approved by WisdomTree UK Limited, which is authorised and regulated by the United Kingdom Financial Conduct Authority.

WisdomTree Ireland Limited and WisdomTree UK Limited are each referred to as “WisdomTree” (as applicable). Our Conflicts of Interest Policy and Inventory are available on request.

For professional clients only. Past performance is not a reliable indicator of future performance. Any historical performance included in this document may be based on back testing. Back testing is the process of evaluating an investment strategy by applying it to historical data to simulate what the performance of such strategy would have been. Back tested performance is purely hypothetical and is provided in this document solely for informational purposes. Back tested data does not represent actual performance and should not be interpreted as an indication of actual or future performance. The value of any investment may be affected by exchange rate movements. Any decision to invest should be based on the information contained in the appropriate prospectus and after seeking independent investment, tax and legal advice. These products may not be available in your market or suitable for you. The content of this document does not constitute investment advice nor an offer for sale nor a solicitation of an offer to buy any product or make any investment.

An investment in exchange-traded products (“ETPs”) is dependent on the performance of the underlying index, less costs, but it is not expected to match that performance precisely. ETPs involve numerous risks including among others, general market risks relating to the relevant underlying index, credit risks on the provider of index swaps utilised in the ETP, exchange rate risks, interest rate risks, inflationary risks, liquidity risks and legal and regulatory risks.

The information contained in this document is not, and under no circumstances is to be construed as, an advertisement or any other step in furtherance of a public offering of shares in the United States or any province or territory thereof, where none of the issuers or their products are authorised or registered for distribution and where no prospectus of any of the issuers has been filed with any securities commission or regulatory authority. No document or information in this document should be taken, transmitted or distributed (directly or indirectly) into the United States. None of the issuers, nor any securities issued by them, have been or will be registered under the United States Securities Act of 1933 or the Investment Company Act of 1940 or qualified under any applicable state securities statutes.

This document may contain independent market commentary prepared by WisdomTree based on publicly available information. Although WisdomTree endeavours to ensure the accuracy of the content in this document, WisdomTree does not warrant or guarantee its accuracy or correctness. Any third party data providers used to source the information in this document make no warranties or representation of any kind relating to such data. Where WisdomTree has expressed its own opinions related to product or market activity, these views may change. Neither WisdomTree, nor any affiliate, nor any of their respective officers, directors, partners, or employees accepts any liability whatsoever for any direct or consequential loss arising from any use of this document or its contents.

This document may contain forward looking statements including statements regarding our belief or current expectations with regards to the performance of certain assets classes and/or sectors. Forward looking statements are subject to certain risks, uncertainties and assumptions. There can be no assurance that such statements will be accurate and actual results could differ materially from those anticipated in such statements. WisdomTree strongly recommends that you do not place undue reliance on these forward-looking statements.

WisdomTree Issuer ICAV

The products discussed in this document are issued by WisdomTree Issuer ICAV (“WT Issuer”). WT Issuer is an umbrella investment company with variable capital having segregated liability between its funds organised under the laws of Ireland as an Irish Collective Asset-management Vehicle and authorised by the Central Bank of Ireland (“CBI”). WT Issuer is organised as an Undertaking for Collective Investment in Transferable Securities (“UCITS”) under the laws of Ireland and shall issue a separate class of shares (“Shares”) representing each fund. Investors should read the prospectus of WT Issuer (“WT Prospectus”) before investing and should refer to the section of the WT Prospectus entitled ‘Risk Factors’ for further details of risks associated with an investment in the Shares.

Notice to Investors in Switzerland – Qualified Investors

This document constitutes an advertisement of the financial product(s) mentioned herein.

The prospectus and the key investor information documents (KIID) are available from WisdomTree’s website: <https://www.wisdomtree.eu/en-ch/resource-library/prospectus-and-regulatory-reports>

Some of the sub-funds referred to in this document may not have not been registered with the Swiss Financial Market Supervisory Authority (“FINMA”). In Switzerland, such sub-funds that have not been registered with FINMA shall be distributed exclusively to qualified investors, as defined in the Swiss Federal Act on Collective Investment Schemes or its implementing ordinance (each, as amended from time to time). The representative and paying agent of the sub-funds in Switzerland is Société Générale Paris, Zurich Branch, Talacker 50, PO Box 5070, 8021 Zurich,

Switzerland. The prospectus, the key investor information documents (KIID), the articles of association and the annual and semi-annual reports of the sub-funds are available free of charge from the representative and paying agent. As regards distribution in Switzerland, the place of jurisdiction and performance is at the registered seat of the representative and paying agent.

For Investors in France: The information in this document is intended exclusively for professional investors (as defined under the MiFID) investing for their own account and this material may not in any way be distributed to the public. The distribution of the Prospectus and the offering, sale and delivery of Shares in other jurisdictions may be restricted by law. WT Issuer is a UCITS governed by Irish legislation, and approved by the Financial Regulatory as UCITS compliant with European regulations although may not have to comply with the same rules as those applicable to a similar product approved in France. The Fund has been registered for marketing in France by the Financial Markets Authority (Autorité des Marchés Financiers) and may be distributed to investors in France. Copies of all documents (i.e. the Prospectus, the Key Investor Information Document, any supplements or addenda thereto, the latest annual reports and the memorandum of incorporation and articles of association) are available in France, free of charge at the French centralizing agent, Societe Generale at 29, Boulevard Haussmann, 75009, Paris, France. Any subscription for Shares of the Fund will be made on the basis of the terms of the prospectus and any supplements or addenda thereto.

For Investors in Malta: This document does not constitute or form part of any offer or invitation to the public to subscribe for or purchase shares in the Fund and shall not be construed as such and no person other than the person to whom this document has been addressed or delivered shall be eligible to subscribe for or purchase shares in the Fund. Shares in the Fund will not in any event be marketed to the public in Malta without the prior authorisation of the Maltese Financial Services Authority.

For Investors in Monaco: This communication is only intended for duly registered banks and/or licensed portfolio management companies in Monaco. This communication must not be sent to the public in Monaco.

For Investors in Israel: Offering materials for the offering of the Shares and securities have not been filed with or approved or disapproved by the United States Securities and Exchange Commission or any other state or federal regulatory authority, nor has any such regulatory authority passed upon or endorsed the merits of this offering or passed upon the accuracy or completeness of any offering materials. Any representation to the contrary is unlawful. The products mentioned herein have not been approved by the Israel Securities Authority and will only be distributed to Israeli residents in a manner that will not constitute “an offer to the public” under sections 15 and 15a of the Israel Securities Law, 5728-1968 (“the Securities Law”) or section 25 of the Joint Investment Trusts Law, 5754-1994 (“the Joint Investment Trusts Law”), as applicable. The products are being offered to a limited number of investors (35 investors or fewer during any given 12 month period) and/or those categories of investors listed in the

First Addendum (“the Addendum”) to the Securities Law, “Sophisticated Investors”) who in each case have provided written confirmation that they qualify as Sophisticated Investors, and that they are aware of the consequences of such designation and agree thereto; in all cases under circumstances that will fall within the private placement or other exemptions of the Joint Investment Trusts Law, the Securities Law and any applicable guidelines, pronouncements or rulings issued from time to time by the Israel Securities Authority.

This prospectus or this document may not be reproduced or used for any other purpose, nor be furnished to any other person other than those to whom copies have been sent. Any offeree who purchases a product is purchasing such product for its own benefit and account and not with the aim or intention of distributing or offering such product to other parties (other than, in the case of an offeree which is a Sophisticated Investor by virtue of it being a banking corporation, portfolio manager or member of the Tel-Aviv Stock Exchange, as defined in the Addendum, where such offeree is purchasing a product for another party which is a Sophisticated Investor).

Nothing in this document should be considered investment advice or investment marketing as defined in the Regulation of Investment Counselling, Investment Marketing and Portfolio Management Law, 5755-1995. Investors are encouraged to seek competent investment counselling from a locally licensed investment counsel prior to making the investment. A recipient of this document may be required to provide confirmation that it is a Sophisticated Investor purchasing a product for its own account or, where applicable, for other Sophisticated Investors.



WisdomTree.eu
+44 (0) 207 448 4330