

---

# THE UKRAINE CONFLICT IS ANOTHER INFLATIONARY SHOCK FOR THE WORLD

Mobeen Tahir – Director, Research  
15 Apr 2022

Alas, it is settled. Inflation is not transitory. Its persistent uptick has serious implications for the global economy. The ongoing conflict, in addition to all the suffering it is causing in Ukraine, has created a further inflationary shock for the world. How are investors hedging themselves?

## Don't be surprised by what the pandemic has done

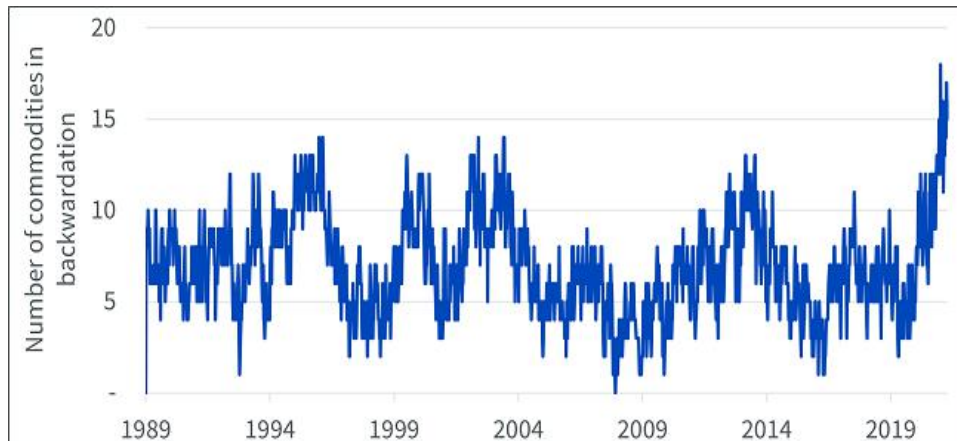
Post-pandemic inflation is not a new phenomenon – that is not to say the COVID-19 pandemic is completely behind us. In the aftermath of the 14th century Black Death, the world faced a breakdown in trade, as efforts were made to contain the spread of the plague, and a shortage of workers – given the astonishingly high death toll. The world has, since then, become a lot more complex, and much more interconnected.

In the UK, airlines including British Airways and Easyjet are scrambling to hire more workers as they struggle to meet the rampant growth in travel demand with a depleted workforce. London's Heathrow airport recently stated that it is stretched as it races to hire 12,000 new staff ahead of summer<sup>1</sup>. The first lesson in economics 101 would tell us that this means high demand and tight supply, a perfect recipe for rising prices – inflation.

## How the conflict has complicated things

The conflict has exacerbated the inflation problem. It has exposed fault lines in already fragile global supply chains. Russia is among the largest producers of commodities including oil, natural gas, palladium, aluminium, nickel, and wheat among others. In certain cases, direct sanctions have been introduced. This is the starkest case of supply disruption. For example, sanctions from the US and UK on Russian oil and gas. For other commodities, there is a question mark. Direct sanctions may not have been introduced but several buyers are exploring alternatives. In an already tight global commodity market (see figure below), and options limited due to commodity supply being a function of natural resources, this is not necessarily easy.

**Figure: A higher number of commodities in backwardation suggests supply tightness**



Source: WisdomTree, Bloomberg, as of 14 April 2022. Backwardation is when spot prices are higher than futures prices. For this chart, backwardation has been calculated using the first and second futures contract for 25 different commodities.

**Historical performance is not an indication of future performance and any investments may go down in value.**

It goes further. Ukraine is the world's biggest exporter of corn, wheat, and sunflower oil<sup>2</sup>. Not only have the flows of these commodities out of Ukraine largely stalled, but spring planting for the next season could also be significantly hampered given the dislocation of people and destruction of infrastructure.

Moreover, Russia and Ukraine together export 28% of fertilizers made from nitrogen and phosphorus, as well as potassium<sup>3</sup>. Fertilizer shortages pose a danger to crop yields further tightening the supply of agricultural commodities and augmenting food price inflation.

#### What can central banks do

Central banks can't send 12,000 new employees to Heathrow Airport. They can't put an end to the conflict. And they certainly can't ensure food or energy security. They can, however, cut back on monetary accommodation – the only lever at their disposal. Tightening monetary policy aims to control inflation by reducing growth. Higher rates should mean fewer people seeking new mortgages or maxing out their credit cards.

But monetary policy accommodation alone didn't create inflation and its withdrawal alone won't solve the problem.

#### What are investors doing?

Investors have been on the move in the last twelve months – even when the US Federal Reserve was clinging on to the 'inflation is transitory' narrative. In the last twelve months, there have been over \$18bn in flows into broad based commodity basket exchange traded products worldwide. Almost \$8bn of which, have come in the last three months, suggesting the trend is accelerating<sup>4</sup>.

We see investors turning towards broad commodities for three distinct reasons. First, commodity market tightness is at the heart of the inflation conundrum. There is,

therefore, a natural relationship between rising commodity prices, and rising prices more widely. Investors are seeking commodities exposure as an inflation hedge. Second, broad commodities help capture the structural demand growth for metals from the energy transition. And third, they offer diversification – not just against equities and bonds but also within the basket given the heterogeneity among the different commodity sectors.

#### Not a question of if, but how

Until last year, whether there is a strong case to add inflation protection was still a dilemma for many investors. Now, focus seems to have shifted towards how best to hedge against it. Commodities aren't the only solution. They do appear to be the favoured solution right now for many.

#### Sources:

- 1 <https://news.sky.com/story/heathrow-says-it-is-stretched-as-it-races-to-hire-12-000-new-staff-12587985>
- 2 <https://www.bloomberg.com/news/features/2022-04-05/will-russia-s-war-in-ukraine-cause-wheat-shortages-raise-food-prices-more?sref=wxRzZ0fT>
- 3 Source: Morgan Stanley as reported by CNBC: <https://www.cnbc.com/2022/04/06/a-fertilizer-shortage-worsened-by-war-in-ukraine-is-driving-up-global-food-prices-and-scarcity.html>
- 4 Source: Bloomberg, as of 14 April 2022.

#### Related blogs

- + [The 4 fundamental investment shifts triggered by the current geopolitical conflict](#)
- + [Why has the Ukraine war put a spotlight on cybersecurity and the energy transition?](#)

#### Related products

- + [WisdomTree Enhanced Commodity UCITS ETF – USD Acc \(WCOA/WCOB\)](#)
- + [WisdomTree Enhanced Commodity ex-Agriculture UCITS ETF – EUR Hedged Acc \(EXAG\)](#)
- + [WisdomTree Broad Commodities UCITS ETF – USD Acc \(PCOM\)](#)

View the online version of this article [here](#).

Important Information

**Marketing communications issued in the European Economic Area (“EEA”):** This document has been issued and approved by WisdomTree Ireland Limited, which is authorised and regulated by the Central Bank of Ireland.

**Marketing communications issued in jurisdictions outside of the EEA:** This document has been issued and approved by WisdomTree UK Limited, which is authorised and regulated by the United Kingdom Financial Conduct Authority.

WisdomTree Ireland Limited and WisdomTree UK Limited are each referred to as “WisdomTree” (as applicable). Our Conflicts of Interest Policy and Inventory are available on request.

**For professional clients only.** The information contained in this document is for your general information only and is neither an offer for sale nor a solicitation of an offer to buy securities or shares. This document should not be used as the basis for any investment decision. Investments may go up or down in value and you may lose some or all of the amount invested. Past performance is not necessarily a guide to future performance. Any decision to invest should be based on the information contained in the appropriate prospectus and after seeking independent investment, tax and legal advice.

The application of regulations and tax laws can often lead to a number of different interpretations. Any views or opinions expressed in this communication represent the views of WisdomTree and should not be construed as regulatory, tax or legal advice. WisdomTree makes no warranty or representation as to the accuracy of any of the views or opinions expressed in this communication. Any decision to invest should be based on the information contained in the appropriate prospectus and after seeking independent investment, tax and legal advice.

This document is not, and under no circumstances is to be construed as, an advertisement or any other step in furtherance of a public offering of shares or securities in the United States or any province or territory thereof. Neither this document nor any copy hereof should be taken, transmitted or distributed (directly or indirectly) into the United States.

Although WisdomTree endeavours to ensure the accuracy of the content in this document, WisdomTree does not warrant or guarantee its accuracy or correctness. Where WisdomTree has expressed its own opinions related to product or market activity, these views may change. Neither WisdomTree, nor any affiliate, nor any of their respective officers, directors, partners, or employees accepts any liability whatsoever for any direct or consequential loss arising from any use of this document or its contents.